



VIRGIN ISLANDS WATER & POWER AUTHORITY

Permanent Meter Base Requirements | Upon applying for

electric service, engineering technicians from the Design & Construction department will inspect your meter base to ensure it meets the Authority's requirements. Below are some requirements that you should have in place.

✓ **DO** have a 5th pin connection to the neutral terminal for a 120/208V 3 phase, 4 wire service.



✓ **DO** have your address clearly labeled on the meter base in permanent paint or adhesive stickers/labels. *Permanent marker is not allowed.*

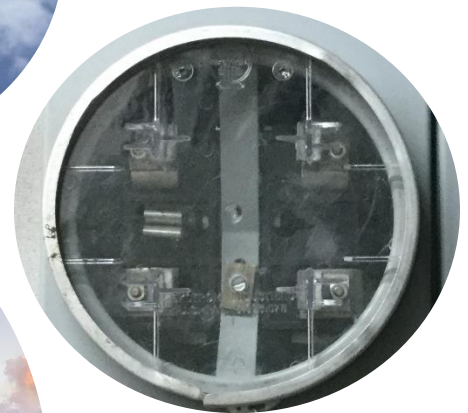


✓ **DO** distinguish the neutral wire from your weatherhead by marking it with white tape (if the wire is not white itself).



✓ **DO** have a circuit breaker installed.

✓ **DO** have a circuit breaker installed for each meter socket if your meter base consists of multiple sockets.



✓ **DO** label each circuit breaker with permanent paint or adhesive stickers/labels with its corresponding socket.



✓ **DO** have your meter base between a minimum of 4 feet and a maximum of 6 feet above the ground.