



THE VIRGIN ISLANDS WATER & POWER AUTHORITY CORPORATE COMMUNICATIONS NEWS RELEASE

(340) 774-3552 • communications@viwapa.vi / www.viwapa.vi

Westbound Lane Closure on Queen Mary Highway for Electrical Infrastructure Work

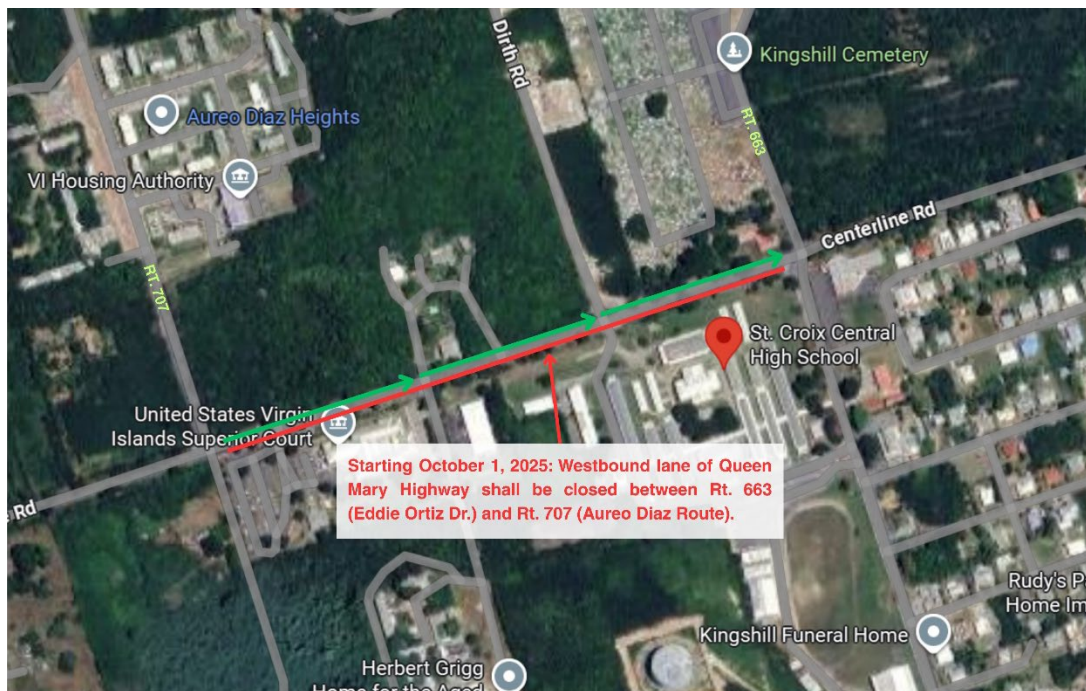


Image: Map showing the westbound lane closure on Queen Mary Highway for underground electrical work.

St. Croix, U.S. Virgin Islands (September 30, 2025) — The Virgin Islands Water and Power Authority (“WAPA” or “the Authority”) advises motorists that beginning Wednesday, October 1, at 9:00 a.m., the westbound lane of Queen Mary Highway/Centerline Road, from the traffic light at Route 663 (Eddie Ortiz Drive near Central High School) to the intersection of Route 707 (Aureo Diaz Heights), will be closed to traffic.

The closure is necessary to allow WAPA’s contractor, J. Benton Construction, to trench across the roadway and install an electrical duct bank as part of the Queen Mary Highway Electrical Undergrounding Project.

Access to the Superior Court, Curriculum Education Center, Herbert Grigg Home for the Aged, and Head Start facilities will be available from the west, at the intersection of Route 707 (Aureo Diaz Route) and Route 70 (Queen Mary Highway/Centerline Rd).

WAPA encourages drivers to plan alternate routes to avoid delays. Motorists are reminded to observe posted speed limits and follow the instructions of flaggers directing traffic safely through the construction area.

We appreciate the community's patience and cooperation as we continue our efforts to improve the reliability and safety of electrical service.

###

About WAPA: The Virgin Islands Water and Power Authority is an autonomous agency of the Virgin Islands Government which produces and distributes electricity and drinking water to residential and commercial customers in the territory. WAPA was created by the Fifth Legislature of the Virgin Islands in 1964 through Act No. 1248. Today, WAPA generates electrical power at production plants on St. Thomas and St. Croix and distributes electrical service through smart grids to customers on St. Thomas, St. Croix, St. John, Hassel Island, and Water Island. Potable water is distributed to almost 13,000 customers through water lines and standpipes. WAPA also has the responsibility of installing and maintaining streetlights.

(340) 774-3552 (STT/STJ) • (340) 773-2250 (STX) |  Virgin Islands Water and Power Authority |  @VIWAPA